



Worcester Polytechnic Institute

WPI MEN'S GCAA NEWSLETTER

WINTER 2009

Alumni Concert

The annual WPI Glee Club Alumni Weekend is upcoming, and we hope you will attend!

The weekend will be full of music and marks the Glee Club's 134th year. Part of this year's discussion at the Alumni meeting is what the group would like to accomplish for our 135th anniversary. A weekend itinerary is on page 4 of the newsletter and online at the Glee Club Associates website:

<http://www.gleeclubassociates.org>

Elections

This year we will be electing two new Board Members to replace the current outgoing members: Matt Ronn '90 and James Haupt '05. These positions are for three year.

The nominating process is intended to solicit volunteers and we try to have board members that span a range of years. The process also allows the Nominating Committee to seek out "volunteers" if needed. If you would like to volunteer for one of these positions or would like to nominate someone, please call or email Christopher Stank, Chair.

Endowment Update

The board would like to thank everyone that has currently contributed to the endowment. We would also like to encourage everyone's to help in the continuous growth of the endowment.

The endowment this year has seen quite a large increase. We are encouraging everyone to attend the annual alumni meeting to find out just how much the endowment has grown.

If you have not fulfilled your pledge or wish to contribute, please contact Christopher Stank, Chair.

Fratres in Cantu

Christopher Stank
cstank@mitre.org
508-769-9664

Greg Case
gwcase@alum.wpi.edu

Thomas Collins
tcollins@wpi.edu
508-831-6044

Current Officers

Chair

Christopher B. Stank
cstank@mitre.org
B.S. 2000/M.S. 2005

Vice Chair

Greg W. Case
gwcase@alum.wpi.edu
B.S. 2005

Secretary / Treasurer

Thomas L. Collins, III
tcollins@wpi.edu
B.S. 2001

Current Board

2007-2010

Steven Sprowson
steven.sprowson@alum.wpi.edu
B.S. 2004

2007-2010

Robert Cummings
bob.cummings@nerc.net
B.S. 1975

2008-2011

Andrew Fowler
afowler@alum.wpi.edu
B.S. 2005

2008-2011

Nate Piper
nwpiper@gmail.com
B.S. 2007

Letter from the Director

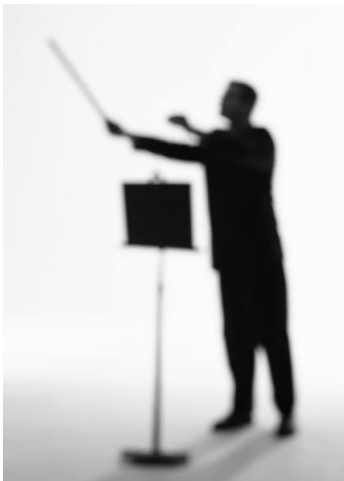
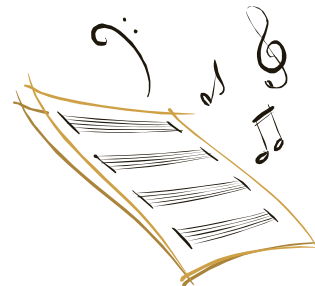
Dear Fratres,

It's hard to believe that Alum Weekend is upon us already. We have had a fantastic year with some extraordinary first-year singers that have bravely started down the path of choral singing here at WPI. This will also be the third year of the updated Stephen J. Kahn award, which by the generosity of Stephen's family and alums is now a very substantially endowed award.

Most importantly we will all lift our voices in song and enjoy the choral tradition that has been and continues to be such an important part of the community here at WPI. I look forward to your participation in Alumni weekend and having a chance to talk at the reception to follow the concert at "Chez Delorey."

Your Brother in Song,

JFD



Attention SHM/Baker's Dozen Alumni

We have finally setup an alumni mailing list. The list has been populated with members that have responded with their email address after the initial request last year. We are encouraging all SHM and Baker's Dozen Alumni to join the mailing list to keep

up with the current events of fellow SHM and Baker's Dozen Alumni.

More information on joining the email list can be found on page 3 of this newsletter!



Letter from the Chair

Dear Brothers in Song:

It is hard to believe that another year has passed, and we have already arrived at the Annual Alumni weekend. Over the past year there have been changes both at WPI and with the WPI Men's Glee Club Alumni Associates.

This year we will be holding elections to replace two current board members, Matt Ronn and James Haupt. I would like to thank both of them for their participation and hard work while on the board over the last three years.

Each year, we elect at least two new members to the board, who have the chance to help shape the direction of our Alumni Organization. We are the second largest Alumni group at WPI, only surpassed by the WPI Poly Club - WPI's Athletic Alumni Organization.

The board is currently working on ways to improve the communication with our fellow alumni. I encourage everyone to participate in the email distribution, as this is the easiest way to disseminate information. We are an alumni organization of over 800, and, to date, we have roughly 200 email addresses subscribed to the

mailing list. This list is moderated to keep the amount of junk email to a minimum. I encourage everyone to use this list to spread information to fellow alumni.

In the near future we will be establishing a web presence on the WPI Online Community (<http://wpi.imodules.com>). Until then, I encourage everyone to setup their account so we can utilize this networking feature established by WPI.

This year we are trying to start a new tradition. On Saturday evening, the current Alumni will be getting together with those graduating this May to help establish a transition from being a member of the Glee Club to being a member of the Glee Club Alumni Association! Join us with your family and friends to start this new tradition!

I look forward to seeing everyone for this year's Alumni concert!

In Cantu,

**Christopher Stank
BS '00/ MS '05**



SHM & Baker's Dozen Alumni - Email list information

To join the mailing list, send an email from your account to:
shm-join@gleeclubassociates.org

To email the moderated SHM / Baker's Dozen email list, send an email to:
shm@gleeclubassociates.org

Glee Club Alumni Associates - Email list information

To subscribe to the Glee Club Associates Email list, send an email from your account to:
gca-join@gleeclubassociates.org

To email the moderated Glee Club Associates email list, send an email to:
gca@gleeclubassociates.org

To email the Glee Club Associates Officer email list, send an email to:
gca_officers@gleeclubassociates.org

*Alumni Weekend Schedule**Friday, March 27, 2009*

- 5:00 pm – 7:00 pm** Pre Acapellafest Dinner & Drinks
WPI's Goat's Head Restaurant, Founders Hall
Come join other alumni for a quick bite to eat before Acapellafest!
**** Cost is the responsibility of each attendee**
- 7:30 pm – 10:00 pm** Simple Harmonic Motion hosts "Acapellafest XIV"
WPI Riley Commons
**** There will be a reserved section of seating for Glee Club alumni.**

Saturday, March 28, 2009

- 12:00 pm – 1:00 pm** Refreshments and greetings
Alden Hall Janet Earle Room
- 1:00 pm – 5:00 pm** Rehearsal for Alumni
Alden Hall Janet Earle Room
- 5:00 pm -** Organized Dinner for Alumni & Seniors
O'Connor's Bar & Pub, Worcester, MA
Following the traditional that was started last year, we are organizing a dinner to include current Alumni, family, guests, and members of the class of 2009. This will be a chance to meet the future alumni.
**** Cost is the responsibility of each attendee**

Sunday, March 29, 2009

- 12:00 pm – 1:00 pm** Glee Club Alumni Annual Meeting
Alden Hall Janet Earle Room
A light breakfast will be provided by the current GCAA board.
Come elect new members of the board, and discuss any concerns.
- 1:00 pm – 2:30 pm** Dress Rehearsal for Alumni and current members
Alden Hall Janet Earle Room
- 3:00 pm** Alumni Concert
Alden Hall Concert Hall
**** Dress for the concert is dark coat/pants and tie.**
- 5:00 pm** Post-Concert Reception
John Delorey's House
496 Main St., Shrewsbury, MA